

Zwischenplatten-Druckbegrenzungsventil NG 10 Modular pressure relief valve NS 10

ZN 10 DB *

Typenschlüssel
Model code

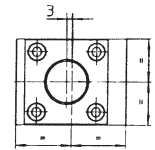
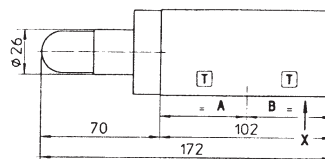
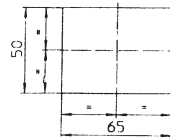
	ZN	10	DB		A	/	H	
Zwischenplattenventil Modular valve								Ohne Angabe = Normalausführung (mit Schutzkappe) H = mit Handradverstellung Without indication = Standard (with protection cap) H = with adjustment by hand wheel
NG 10 Nominal size 10								Druckventil wirksam in Leitung / Line A Pressure valve effective in Leitung / Line B Leitung / Line P
Druckbegrenzungsventil, vorgesteuert Pressure relief valve, pilot operated								Druckeinstellbereich 5 - 100 bar = 100 Pressure adjustment range 5 - 210 bar = 210 5 - 350 bar = 350

Abmessungen / Dimensions

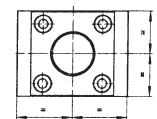
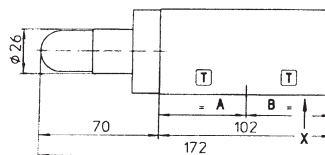
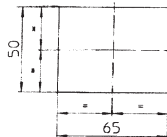
Max. Betriebsdruck : 350 bar
Max. working pressure : 350 bar

Gewicht : 2,5 kg
Weight : 2,5 kg

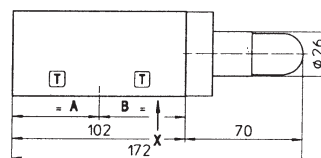
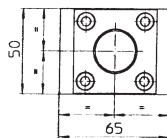
ZN 10 DB * P



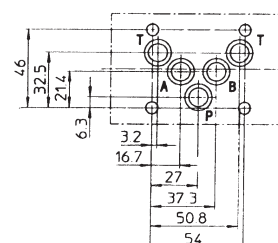
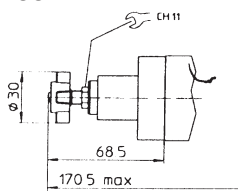
ZN 10 DB * A



ZN 10 DB * B



Ausführung "H" mit Handrad
Design "H" with hand wheel



Anschlußbild :
A 10 DIN 24340 bzw. CETOP 05

Dichtungen :
5 Stück O-Ringe
2-014 (12,24 x 1,78)

Mounting configuration :
A 10 DIN 24340 resp. CETOP 05

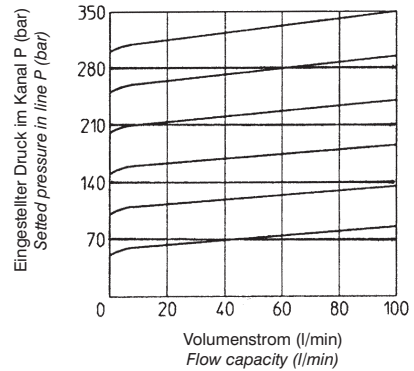
Seals :
5 off o-rings
2-014 (12,24 x 1,78)

Kennlinien
Characteristics

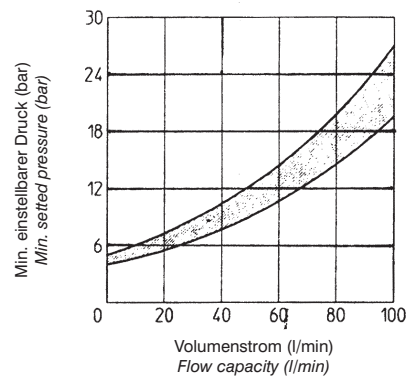
Eingestellter Druck / Volumenstrom
Regulated pressure / Flow

Werte ermittelt bei
Ölviskosität 25 cSt,
Öltemperatur 40°C

Values determined at
oil viscosity 25 cSt,
oil temperature 40°C

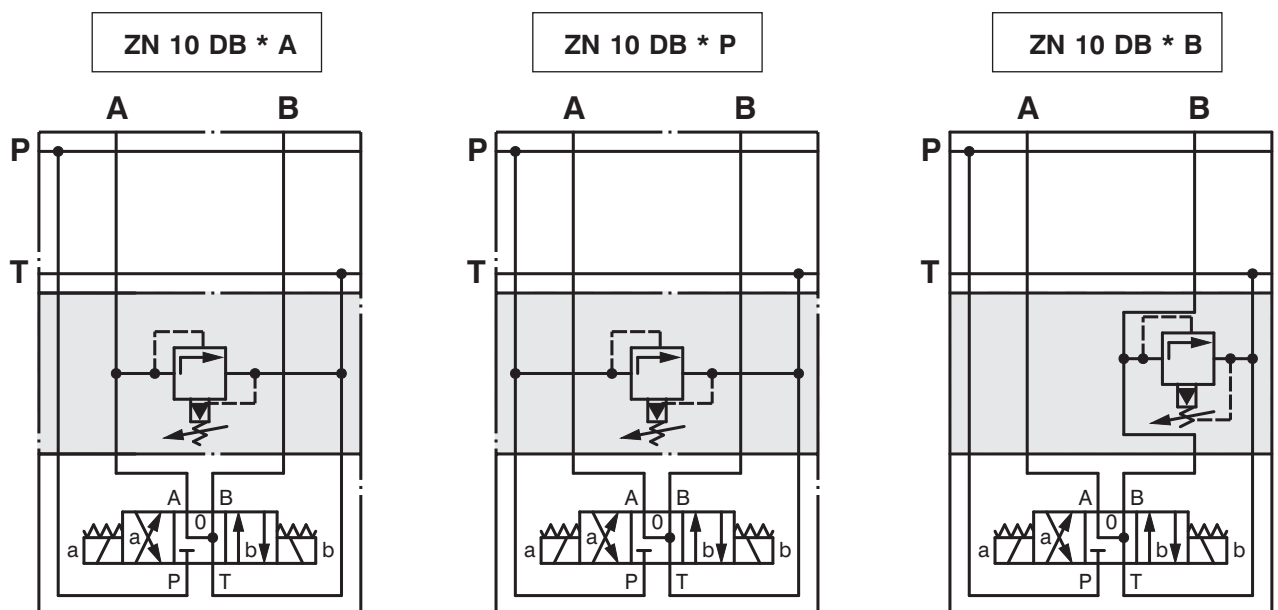


Min. Druck / Volumenstrom
Min. pressure / Flow



Anwendungsbeispiel
Example for application

Schaltzeichen nach DIN ISO 1219
Symbols acc. to DIN ISO 1219



4042-0010-12/00-2/2