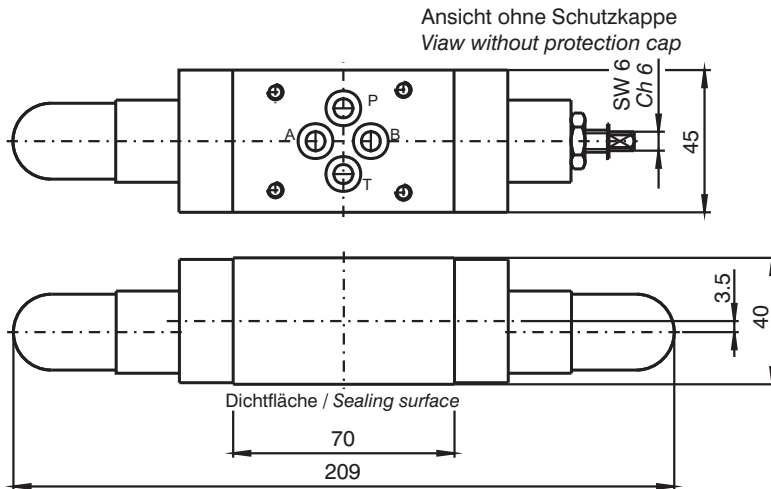


# Schockventile, vorgesteuert ZN 6 DBS - \* - AB

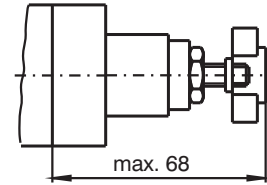
## Shock valve, pilot operated ZN 6 DBS - \* - AB

### Abmessungen / Dimensions

Zur Absicherung gegen Schockwirkung (bei plötzlichen Bremsvorgängen), speziell für Hydro-Motoren  
 Specially for protection of hydro motors ( for suddenly brake - stops )



Ausführung "H" mit Handrad  
 Design "H" with hand wheel

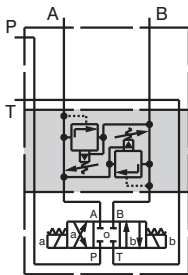


Max. Betriebsdruck 350 bar  
 Max. working pressure 350 bar

Masse : ca. 1,4 kg  
 Weight : approx. 1,4 kg

### Anwendungsbeispiele / Examples of application

ZN6 DBS \* - AB

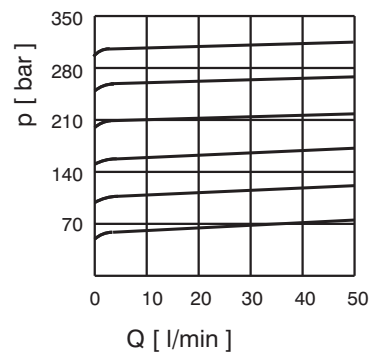


Druckbereiche / Pressure ranges:

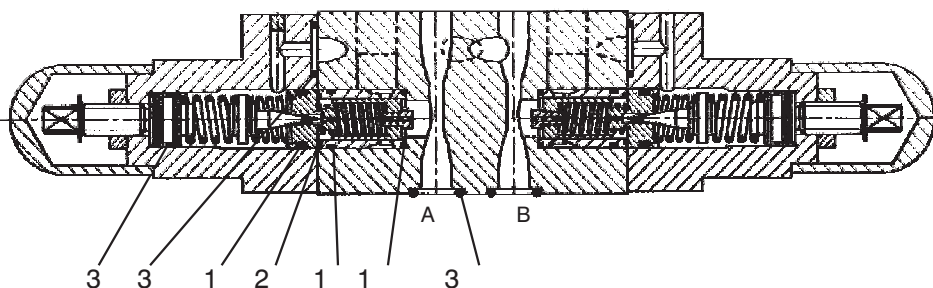
- 100 = 5 - 100 bar
- 210 = 5 - 210 bar
- 350 = 5 - 350 bar

### Kennlinien / Performance Curves

Werte ermittelt bei Ölviskosität 24 cSt,  
 Öltemperatur 50°C  
 Values determined at oil viscosity 24 cSt,  
 oil temperature 50°C



### Schnittzeichnung mit Dichtsatz / Sectional drawing with seal kit



Pos. Item	Stück No.	Benennung Designation
1	6	O-Ring / o-ring OR 2-014 (12,42 x 1,78 ) NBR 70 Shore
2	2	O-Ring / o-ring OR 2-013 (10,82 x 1,78 ) NBR 90 Shore
3	8	O-Ring / o-ring OR 5-612 (8,74 x 1,78 ) NBR 90 Shore