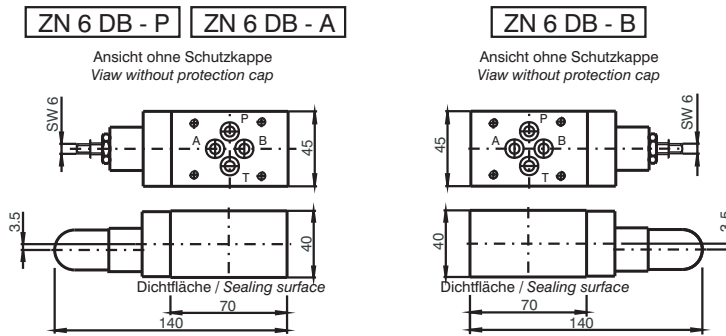


Druckbegrenzungsventile, vorgesteuert NG 6 Pressure relief valve, pilot operated NS 6

ZN 6 DB - *

Abmessungen / Dimensions

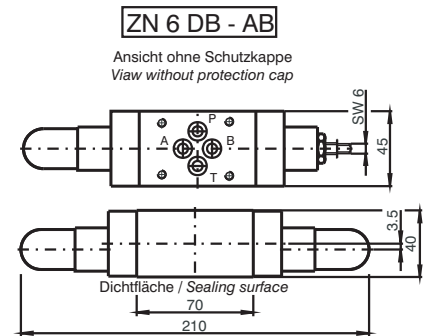
Einfach-Druckbegrenzungsventile
Single pressure relief valves



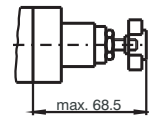
Druckbereiche / Pressure ranges:
100 = 5 - 100 bar
210 = 5 - 210 bar
350 = 5 - 350 bar

Max. Betriebsdruck 350 bar
Max. working pressure 350 bar
Masse : ca. 1,3 kg
Weight : approx. 1,3 kg

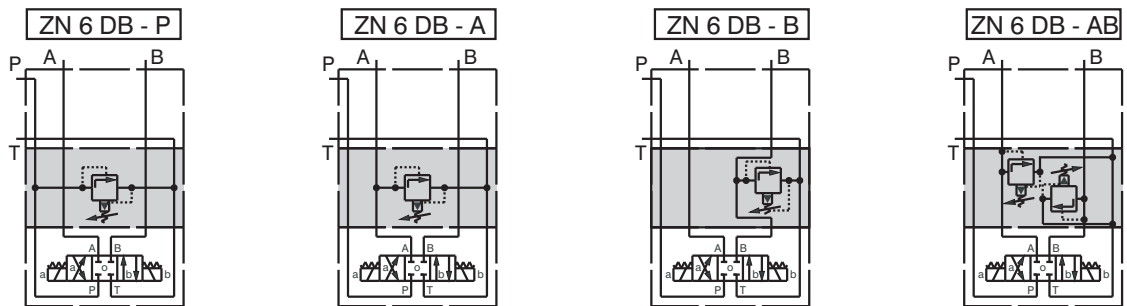
Doppel-Druckbegrenzungsventile
Double pressure relief valve



Ausführung "H" mit Handrad / Design "H" with hand wheel

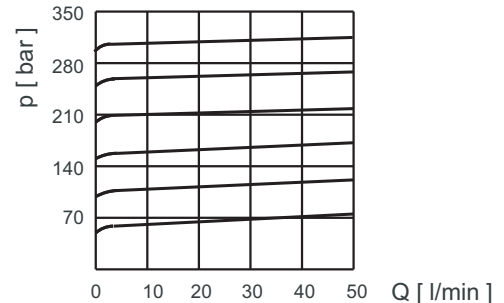


Anwendungsbeispiele / Examples of application



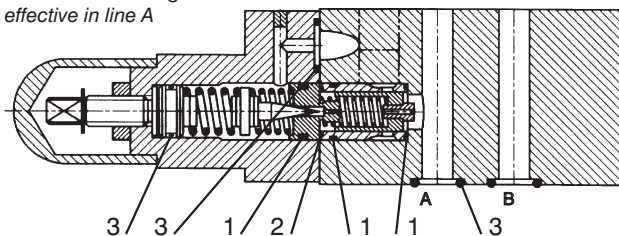
Kennlinien / Performance Curves

Werte ermittelt bei Ölviskosität 24 cSt,
Öltemperatur 50°C
Values determined at oil viscosity 24 cSt,
oil temperature 50°C



Schnittzeichnung mit Dichtsatz / Sectional drawing with seal kit

Dargestellt : Ventil wirksam in Leitung A
Presented : Valve effective in line A



Pos. Item	Stück No.	Benennung Designation
1	3	O-Ring / o-ring OR 2-014 (12,42 x 1,78) NBR 70 Shore
2	1	O-Ring / o-ring OR 2-013 (10,82 x 1,78) NBR 90 Shore
3	6	O-Ring / o-ring OR 5-612 (8,74 x 1,78) NBR 90 Shore